

COMMUNITY LINK

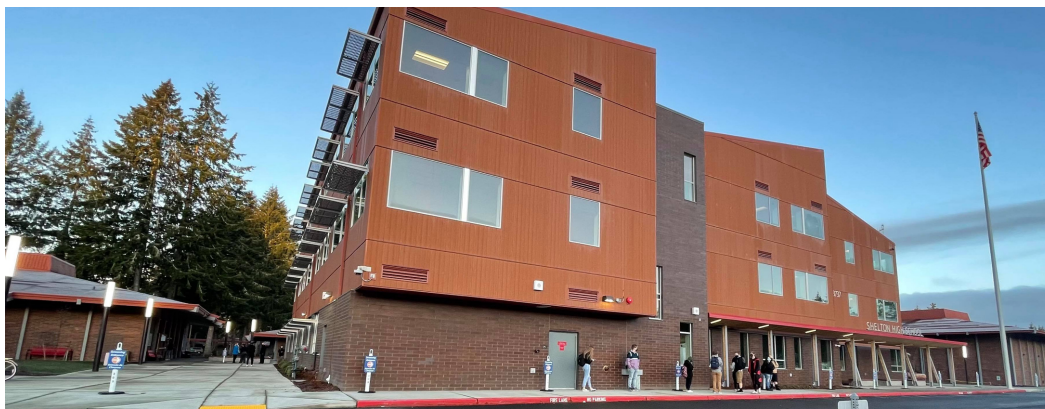
STRONG SCHOOLS STRONG COMMUNITY



Even masks can't hide the excitement of being back on campus!

WE ARE BACK!

February 22nd was an exciting day as we welcomed back our kindergarten, first-grade, fifth-grade, and seventh-grade students for a blended model of in-person learning. March 15th was also an eventful day as we welcomed back the remaining grades! A lot of hard work was put into making sure we were ready to safely welcome students back for in-person learning in a blended model. We are proud of where we are today and see a bright future ahead!



Socially-distanced students lined up to enter the Shelton High School campus on their first day back for in-person learning in nearly a year.

Shelton School District is prepared to open schools five days a week for all students in the fall for the 2021-22 school year. The health and safety of our students, staff, and families remain our top priority and we continue to monitor COVID data daily. If at any point during the 2021-22 school year circumstances change, we are prepared to shift to a hybrid or 100% online model, but for planning purposes, Shelton School District fully intends for students to return to school full-time for in-person learning in the fall.

PLEASE
WELCOME
OUR NEW
SUPERINTENDENT:
MR. WYETH JESSEE



I am honored to be selected to serve as Shelton's next superintendent. The long-standing commitment to public education is what attracted me to Shelton. When touring the district, it was evident there is a focus on student achievement, pride in our schools, strong relationships amongst the board and staff, and instructional services designed to meet the needs of the whole child.

As an educator, I feel fortunate to help shape the lives of so many students and recognize the tremendous responsibility that comes with the job. Whether leading the classroom, school, or at the district level, I've created warm, engaging learning environments that support the diverse needs of students.

cont. on page 2



NEED HELP? WE'VE GOT YOU COVERED!

From a clothing bank, food bank, household-items-bank, and a mobile 'Resources on Wheels' (ROW) bus, SSD's Student & Family Resource Center (SFRC) has got you covered! The SFRC, previously located downtown, has moved into the old Mt. View Elementary building and is ready to assist Shelton students, families, and community members with the resources they need, no questions asked.

The SFRC is run off of grants and generous donations from our community and local business. Sierra Pacific Industries has been a huge supporter and contributor to the center. Their donations have helped purchase ROW, the resource bus. Green Diamond Resource Co. has been a great support as well by donating money to purchase a washing machine and dryer to launder the donated clothing before it goes into the clothing bank. Jalisco Tortilla Factory has also generously donated to assist in the purchase of the center's washing machine/dryer and the essentials for washing clothes.



If you are in need of clothing, food, or household items, please contact your school's family liaison to schedule an appointment to visit our center. If you have questions about the SFRC or would like to make a donation, please contact the director of the SFRC, Betty Uriostegui: BUriostegui@sheltonschools.org.

Wyeth Jessee cont.

During my experience as a senior leader in Seattle Public Schools, we were able to accelerate student learning and close achievement gaps for historically marginalized populations. We achieved this through building a district-wide coherence model, centering equity and excellence on a smaller set of instructional moves and professional practices, and working in partnership with families and community-based organizations.

I'm a Washington native who is a proud father of two kind, confident, and beautiful girls who fill my battery with shared activities like running, golfing, board games, and cooking. When I have downtime, I'm usually working on home improvement projects either outside or inside the home.

As I integrate into the Shelton community, I'm excited to meet folks and champion continued success for all students.

END OF YEAR CELEBRATIONS



May 27: CHOICE Middle School Moving Up Ceremony

- Time: 1:00 PM - 2:00 PM
- Location: Virtual

June 2: Oakland Bay Jr. High Moving Up Ceremony

- Time: 3:00 PM - 5:00 PM
- Location: Oakland Bay Jr. High

June 3: CHOICE High School Graduation

- Time: 6:30 PM
- Location: Shelton High School Stadium

June 4: Cedar High School Graduation

- Time: 6:30 PM
- Location: SHS Performing Arts Center

June 5: Shelton High School Graduation

- Time: 11:00 AM - 3:00 PM
- Location: SHS Stadium

June 9: Olympic Middle School Moving Up Ceremony

- Time: 3:00 PM - 5:00 PM
- Location: Olympic Middle School

June 9: Bordeaux Elementary Moving Up Ceremony

- Time: 4:00 PM - 6:00 PM
- Location: Bordeaux Elementary School

June 9: Evergreen Elementary Moving Up Ceremony

- Time: 4:00 PM - 6:00 PM
- Location: Evergreen Elementary School

June 9: Mt. View Elementary Moving Up Ceremony

- Time: 4:00 PM - 6:00 PM
- Location: Mt. View Elementary School

**Please check with your school as event details are subject to change based on the current COVID restrictions.*

SHELTON ACADEMIES UPDATE: MET ACADEMY & NYE PROPERTY

The Shelton School District is excited to announce that work has begun on the Manufacturing, Engineering, and Technology Academy (MET) building! We had a successful bidding for the project and the bidder was approved by the school board. Permits have been issued by the city and the contractor has assumed responsibility for the site. The MET Academy building is scheduled for completion in Fall 2021 with classes beginning the 2nd trimester of the 2021-22 school year.

The equipment for the academy has been ordered and will be delivered as the building is finished. Shelton High School teacher, Jake Fullington, will be the instructor for the classes.

A special thank you to Sierra Pacific Industries who donated \$25,000 towards the project. Also, thank you to their employees and the other community members who worked with us on the design and equipment selection for the project.



The Nye Property project has had two community advisory meetings at which those partners helped us make decisions about what to include in an expanded construction pathway and how an instructional space might operate.

District personnel along with the project manager and the architect visited the site and work is commencing on building evaluation and planning for the construction trades program.

TERRY GREGG COURT NAMING CELEBRATION



05.26.21 | 6:45PM
Shelton High School
Mini Dome

The community is invited to join the Shelton School District celebration of Terry Gregg Court before the boys' varsity basketball game vs. W.F. West at the Shelton High School Mini Dome.

Terry Gregg has dedicated many years to his coaching career for Shelton High School, winning countless games and league championships, and has been named Coach of the Year multiple times. Coach Gregg has proved his dedication to Shelton School District's student-athletes repeatedly and is well-deserving of this honor.

Registration information and details can be found at www.sheltonschools.org
We look forward to celebrating with you!



700 South 1st St
 Shelton, WA 98584
 360-426-1687

NON-PROFIT ORG.
 U.S. POSTAGE PAID
 Shelton, WA
 Permit No. 29

REGISTER FOR KINDERGARTEN TODAY!

ENROLL ONLINE BY VISITING WWW.SHELTONSCHOOLS.ORG OR PICK UP AN ENROLLMENT PACKET AT YOUR NEIGHBORHOOD ELEMENTARY SCHOOL

** TO ENROLL, YOUR CHILD MUST BE FIVE YEARS OLD ON OR BEFORE AUGUST 31ST **

Enrollment Timeline

- Now - June 24: Enroll online or pick up/drop off an enrollment packet at your neighborhood school
- June 25 - August 22: Enroll online or pick up/drop off an enrollment packet at the District Office (700 S 1st St.)
- August 23 and after: Enroll online or pick up/drop off an enrollment packet at your neighborhood school

Enrollment packets may be picked up at our three elementary schools during school hours. Please contact your neighborhood school to set up an appointment to drop off your completed packet. When calling please leave a message and know that you will hear back from someone within 48 hours.

Bordeaux Elementary School

- English: (360) 426-3253
- Español: (360) 545-7310

Evergreen Elementary School

- English: (360) 545-7338
- Español: (360) 463-4393

Mt. View Elementary School

- English: (360) 426-8564
- Español: (360) 545-7136



APPLY TODAY →

DOWNLOAD A FILLABLE APPLICATION AT CEDAR.SHELTONSCHOOLS.ORG OR PICK UP A PAPER APPLICATION AT 807 W. PINE STREET

A PROJECT-BASED HIGH SCHOOL SERVING GRADES 9-12

- Do you want to take classes using real-world skills that you can apply to your future?
- Are you motivated in your learning and interested in creativity and critical thinking?
- Are you excited to work in collaboration to solve real-world problems?
- Are you committed to diversity and equity?
- Do you like the idea of combining two or more subjects into one class?
- Are you interested in earning certificates in high school that will help you get a job after graduation?

Cedar High School could be the perfect fit for you!

For questions, please email Amber Hosford at AHosford@sheltonschools.org

DO YOU WANT TO RECEIVE SSD COMMUNITY LINK NEWSLETTERS IN YOUR EMAIL?

Send an email titled "Community Link" to goodnews@sheltonschools.org and begin receiving your copy!

TO OPT IN FOR TEXT MESSAGING
 Text "YES" to 67587

STAY CONNECTED



The Shelton School District does not discriminate in any programs or activities on the basis of sex, race, creed, religion, color, national origin, age, veteran or military status, sexual orientation, gender expression or identity, disability, or the use of a trained dog guide or service animal and provides equal access to the Boy Scouts and other designated youth groups. The following employee has been designated to handle questions and complaints of alleged discrimination: Terry Meisenburg, Director of Human Resources. 360-426-1687. 700 S. 1st Street; Shelton, WA 98584. Complaint procedure can be found on this website under Board Policy #3210 (students) and #5010 (employees).