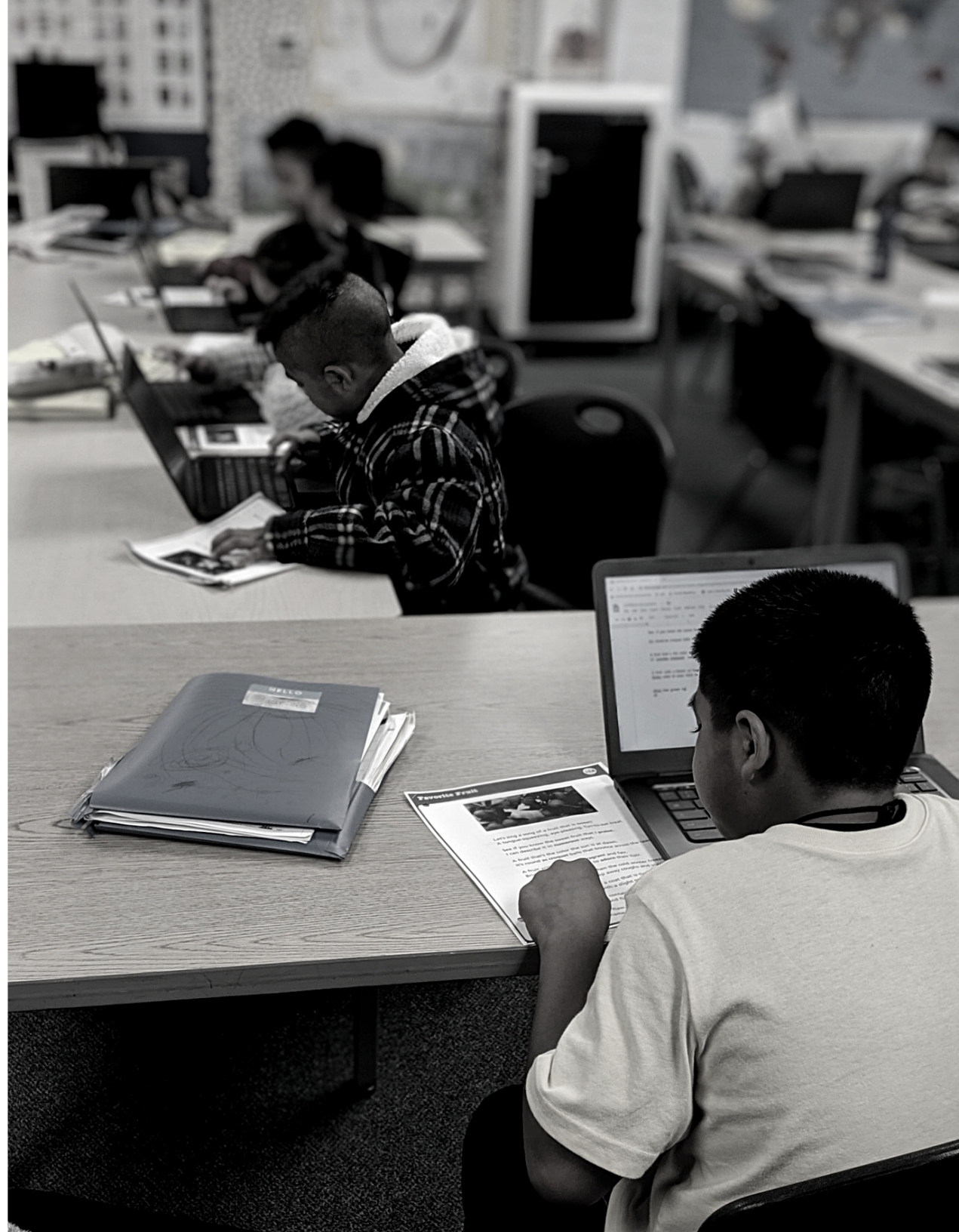




SHELTON SCHOOL DISTRICT
STRATEGIC PLAN 2022 - 2027



INTRODUCTION

The Shelton School District is a public school district made up of a growing diverse student body. Shelton is creating opportunities for young people to discover, research, and launch their own best futures by inspiring, challenging, and empowering all students. As we look toward the future of our schools, expectations are being raised and we are excited to increase access and opportunities for students. To meet this objective, we need a focused and detailed plan to guide our work over five years.

BUILDING OFF OUR FOUNDATION

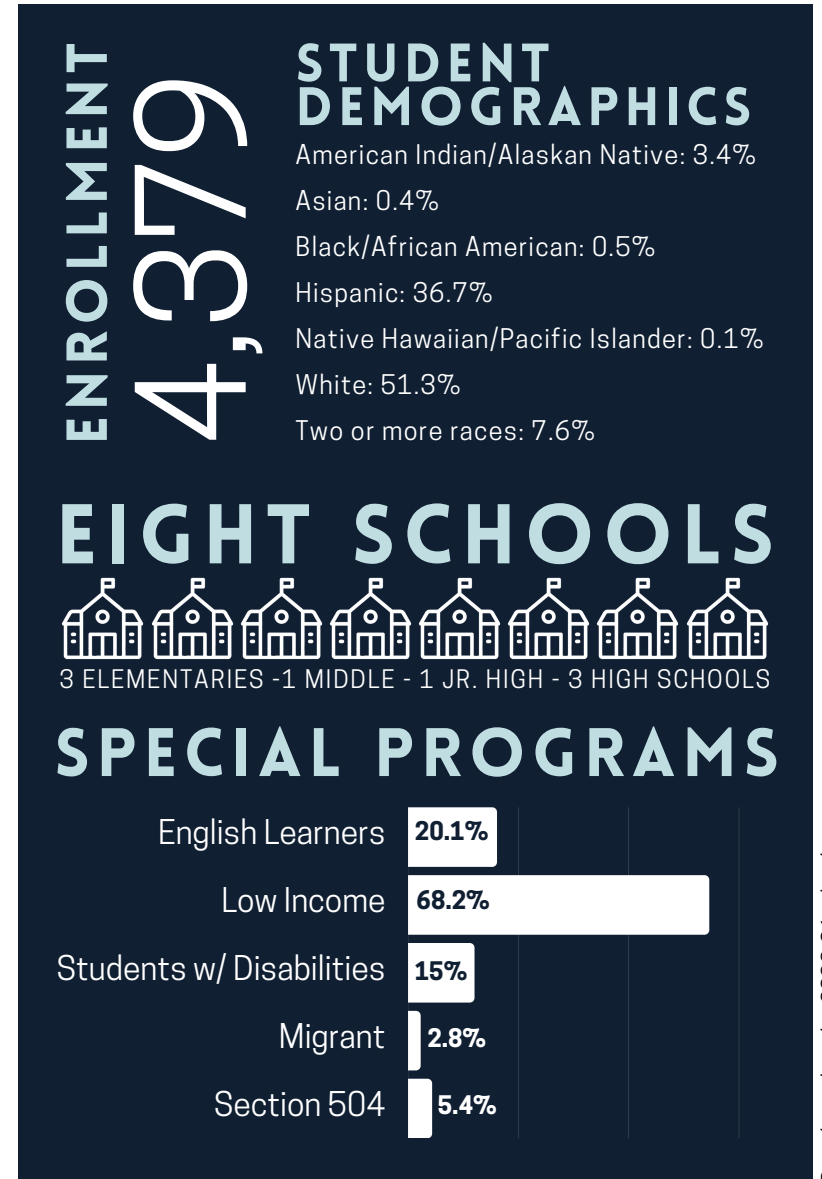
After a year and a half of online and hybrid instruction starting in 2020, we are thrilled to have all students back in school, in-person, full-time. We are pleased to have kept our doors open since reopening in fall 2021.

Construction projects funded by the school bond passed in 2017, are near completion and now have students, staff, families, and community members enjoying the new and upgraded facilities, which include: a new Mt. View Elementary School, a new 3-story academic building at Shelton High School, a new gymnasium at Bordeaux Elementary School, updated athletic facilities, and more.

After opening its doors for the 2020-21 school year, our brand new Cedar High School is wrapping up its second year located on the Olympic College campus where students have a variety of educational opportunities.

After the successful launch of the Health Science Academy in 2018, four more academies have been launched (Freshman Academy, Natural Resources, Business, Finance, and Hospitality, and Manufacturing Engineering, and Technology). Shelton High School is now home to a brand new Manufacturing, Engineering, and Technology (MET) Academy that recently opened its doors earlier this school year.

A special recognition to Dr. Alex Apostle and Shelton School Board members who helped create a strong foundation for the Shelton School District, from improving facilities, increasing graduation rates, to increasing expectations for staff and students. Their leadership serves us well now and into the future.



Data based on the 2020-21 school year.



COMMUNITY INSPIRED PLAN

Starting in the fall of 2021 through winter, the Strategic Plan Steering Committee, composed of 12 community and staff members met to review past and current data and input gathered from over 1,000 Shelton School District stakeholders to help develop Shelton Success. The input was gathered through a community survey and 17 focus groups with students, parents, staff, and business and community members.

WE HEARD

There is a need for higher expectations for all students.

Students feel more successful when teachers give them a lesson plan to help keep them on track for what they are learning and teach vs. assigning worksheets.

Students want to feel respected, safe, and comfortable at school.

A majority of students did not feel prepared for high school/transitions between schools/grade-levels.

INPUT

570

Respondents to the Strategic Plan Survey

85

Students in focus groups

23

Parents in focus groups

27

Business & community leaders in focus groups

462

School-based staff

WHAT WE BELIEVE

- 1** In outreach and collaboration with all communities, including those underrepresented. Our decisions reflect diverse perspectives.
- 2** All students deserve access to high-quality, rigorous, and engaging educational experiences that meet their needs, interests, passions, and post-secondary goals. These experiences help students discover their unique gifts and talents.
- 3** Authentic education requires cultivation of trust, communication, and acknowledgment of our barriers, met with courage and action to support all learners' growth.
- 4** In encouraging students to be their own agents of success, where their individual educational journey is front and center. Students are valued, heard, and respected by their peers and adults.
- 5** Relationships are key to student growth and empathy and compassion can bridge our differences.



WHAT WE ARE FOCUSED ON...



HOW WE MEASURE SUCCESS...



Priority #1: High Quality Literacy Instruction

Every student will have a love of literacy and sees themselves as a reader and writer. Students will be active participants as readers and writers in a literacy-rich classroom environment

All students will receive comprehensive literacy instruction aligned with the breadth and depth outlined by Common Core State Standards.



3rd Grade ELA on SBA (% met)

7th Grade ELA on SBA (% met)



Priority #2: College & Career Readiness

Every student/family transitioning between schools at the identified grades will be invited, welcomed, and supported through an orientation experience.

Students have the academic coursework, experience, information, and responsibility necessary for their post-secondary plan.



A CCR graduate (combo metric)

9th Grade on-track (6 credits)

WHAT WE ARE FOCUSED ON... —————> HOW WE MEASURE SUCCESS...



Priority #3: Invest in Effective Educators and Leaders

Recruit, hire and retain caring, passionate, and skilled employees to support student success.

Firmly establish district and community core values and beliefs among staff to shape the District culture.



3rd Grade ELA on SBA (% met)

7th Grade ELA on SBA (% met)



Priority #4: Safe and Welcoming

Our goal is to nurture all areas of students development and learning.

We will create a safe, supportive, and inclusive learning environment for all stakeholders.



Discipline Rate (In-Out suspension)

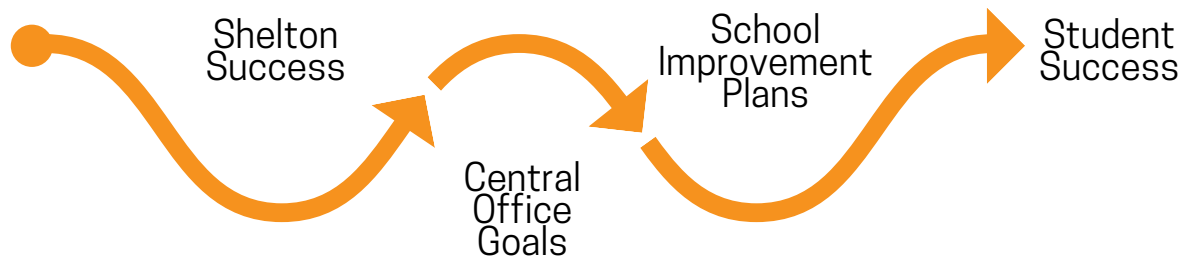
Attendance Rate (daily attendance)

NARROWING OUR FOCUS

- Shelton School District is committed to our priorities because we believe they provide the greatest amount of leverage to student success.
- We are clear in our plan with details to provide the depth to get results and sustain them.
- Resources will be dedicated to our priority areas.

ALIGNMENT

Operationalizing a strategic plan requires disciplined structures and a culture of collaboration. We will nest our activities and actions under the strategic plan.



OUR COLLECTIVE COMMITMENT

If we are going to effectively shape the future of the youth in the Shelton School District, we need to ensure access and opportunity through an equitable approach. Further, the district needs families and community members to step in and help, even a little.

EQUITY STATEMENT

Shelton School District is located where the Salish Sea meets the gateway to the Olympic Mountains, serving the Squaxin Island and Skokomish Indian Nations and growing Latino population. We are committed to building positive, purposeful relationships with every student and family and providing learning at the highest level. Diversity among Shelton families and staff is valued, sought, and embraced. Different abilities and backgrounds do not limit educator expectations on student outcomes.

We acknowledge the variety of students' lived experiences and backgrounds, which may encompass racial, ethnic, religious, gender, gender identity, sexuality, economic class status, age, family structures, language, cognitive and physical ability, and trauma which inform individual experiences.

ASK OF THE COMMUNITY

We ask teachers, and school staff to hold students to higher expectations and to model those standards in their own behavior.

We ask families to raise the bar at home and give their children the support they need to be successful at school.

We ask community members to consider committing more of their time and talent.

